



Annual Report Fiscal Year 2019

*Dedicated to providing free
quality services for the positive
development and recovery of
children, youth and families.*



INTRODUCTION

Payne County Youth Services, Inc. is pleased to provide this Annual Report to our stakeholders. In this report we have highlighted activities, community partners, members of our Board of Directors and Advisory Board for Sustainability and Public Awareness, Staff, and our programs. We have presented our financial position and highlighted some of our most loyal volunteers and donors.

PCYS is in our 47th year of service provision. We are grateful to the many staff, members of boards, donors, volunteers, and others who facilitated this milestone. We remain dedicated to excellent quality, effective, and efficient services that never require payment from the service recipient or their families.

We invite you to help us increase our impact by serving on a board, donating, volunteering, attending fundraising events, and connecting us with your contacts. Please lend your talent, time and treasure to this endeavor. You can make a positive difference in the life of a child, youth, and family by joining forces with PCYS.

PCYS RECEIVES OUTSTANDING REVIEWS



Payne County Youth Services continue our long and exemplary history of receiving a 100% Compliance rating along with Commendations on Peer Review by the Oklahoma Association of Youth Services and the Oklahoma Office of Juvenile Affairs Monitoring.

The Emergency Youth Shelter and Child Placing Program received outstanding results from the OKDHS Licensing Division.

Payne County Youth Services received a 99.9% Compliance rating on our 2018 CARF audit and a 3-year certification, the longest certification CARF bestows.

PCYS ACCREDITATIONS AND LICENSES



Payne County Youth Services strives to provide services every day in the most professional, effective, and efficient manner. Our most important feedback comes from our stakeholders, which include clients, families, referral sources and the community. PCYS is accredited, monitored and licensed by:

The Commission on Accreditation of Rehabilitative Facilities (CARF International)
The Oklahoma Department of Mental Health and Substance Abuse Services
The United Way of Payne County
The Oklahoma Office of Juvenile Affairs
The Oklahoma Association of Youth Services
The National Safe Place
The Oklahoma Department of Human Services Licensing Division
The Oklahoma Department of Commerce
The Federal Department of Health and Human Services
The Oklahoma Office of District Attorney's Council

11th Annual *An Evening to Remember*

On Friday, January 25 2019, Payne County Youth Services held its 10th annual event, *An Evening to Remember*. Guest speakers for the event included Danielle Santiago who spoke about life as a Foster Care parent, Stillwater City Manager and former PCYS Advisory Board Member Norman McNickle, Event Sponsor, Enbridge Regional Services Manager, Ryan Stahler, and videos were presented from two Transitional Living Program participants speaking of their progress from being in the program. Each shared their unique perspective on the real life impact that the services of PCYS makes in the lives of members of our communities. Guests were treated to entertainment by local Payne County school student orchestra and choir that surprised the crowd with a phenomenal Greatest Showman rendition and the amazing performance of Inspyril Entertainment for our circus-themed event. PCYS thanks all of the volunteers, greeters, emcee Dave Hunziker, OSU "Voice of the Cowboys", and the Oklahoma State University Student Union for helping with the success of the night.

Two Months of Successful Fundraising

While our January event *An Evening to Remember* presented an awareness of what we offer to the community, it doubled as a kick off to our second annual *20 Days of Giving from the Heart* digital campaign. After 20 days of social media and online outreach we reached our goal of \$30,000 with the help of so many established and new donors.

**We are excited to invite everyone to our 12th Annual
An Evening to Remember on April 10, 2020 at the new
McKnight Center for the Performing Arts in
Stillwater where "Every Child is a Star".**



FY2019 PROGRAM OUTCOMES AND OUTPUTS

Emergency Shelter – The Emergency Youth Shelter provides a safe place to stay for youth in crisis, protecting children and youth from child abuse, neglect and trauma. In FY 2019 78 young people stayed a total of 2,015 days in the Shelter. Average length of stay was 24 days, with some residents staying over a year.

Mental Health and Substance Abuse Counseling – Individual family and group counseling helps clients work through issues and meet goals. The program counseled 244 youth and their families, improving their functioning and quality of life.

Community Education/Development – Provides opportunities and information to the community in order to work collaboratively in support of youth and families, thus creating a more productive and healthy community. These services were presented to 61,345 people for 10,871 hours.

Skills for Success/First Offender Program – A program for youth who have violated or are at-risk for law-violation, this program reduces future penetration into the Juvenile Justice System and enhances communication and relationships within families. 29 youth and their parents/guardians were served by the program. The PCYS program demonstrated a success rate of 96% with only 4% penetrating further into the Juvenile Justice System.

Safe Place – Safe Place ensures young people in crisis can get help 24/7/365. 30 youth accessed Safe Place in FY 2019. Safe Place information and training provided to 52,000 individuals. The knowledge and courage for youth to advocate for their safety and that of their peers is strengthened by this program. Safe Place sites total 59 in 6 communities, as well as 30 rolling sites with the OSU BOB's Bus Transit System, which create a county-wide safety net where children and youth get help fast.

Case Management – Case management services assist clients and their families to connect with their community and better implement skills learned in programming. 4,444 hours of case management were provided to clients across programs.

Victims of Crime (VOCA) Services – 211 clients were served by this program. VOCA services empower and engage clients to process and recover from abuse, neglect, and trauma and advocates for victims' rights and needs.

Prevention Programming – Art – 120 youth participated in the PCYS Art, Photography and Poetry Contest. This contest provides opportunities and supports to youth to express themselves appropriately. Performance feedback and prizes are provided.

Transitional Living Program – TLP provides intensive support for youth transitioning into adulthood by protecting youth from the risks of homelessness, teaching life skills, counseling, fostering independence and permanent connections and facilitating successful independent living. TLP served 21 clients during 2019.

Foster Care Program – PCYS had implemented our program in 2014, and recruited, trained and supported Foster Care Families and Homes within our Foster Care system. Having provided exemplary services to foster children and foster parents, PCYS closed our Foster Care Program at the end of the 2019 fiscal year. Contracting opportunities with DHS had been removed by the state, making the program not fiscally sustainable. PCYS was able to transfer our families to a long-time partner agency, Meadows of Hope, and continues to provide counseling, sheltering, and other services to foster children and their families.

Botvin Life Skills – An evidence-based curriculum provided to Stillwater Public Schools Middle School students, this program assists youth to learn skills that enhance appropriate behavior, critical thinking, and decision-making and builds supportive substance abuse prevention skills. 450 youth benefited from Life Skills Education.

Building a Competent Community for Suicide Prevention—A new program for 2019, BCC uses evidence-based curriculum to provide training to adults to be “gatekeepers” to identify, intervene, and assist persons contemplating suicide. Over 1,000 trained in FY2019.

Training – PCYS staff benefited from 1,065 hours of specialized, program-specific training to ensure quality interventions. Staff provided training to others for 111 hours

Performance Measures for Counseling Program

Effectiveness — Effectiveness is measured in counseling progress using an industry-standard assessment, the Client Assessment Record. 86% of clients showed an improvement on this measure.

Accessibility of Services – Accessibility of services is measured by the length of time it takes from a person's initiation of a services request until they are contacted by PCYS, with a goal of 15 days. Our output measure is 96%.

Client Satisfaction – Client satisfaction is measured using a scale of 0-5 on a set of questions with 5 being the most favorable response. Responses averaged 4.5 on this measure.

Statement of Financial Position as of June 30, 2019

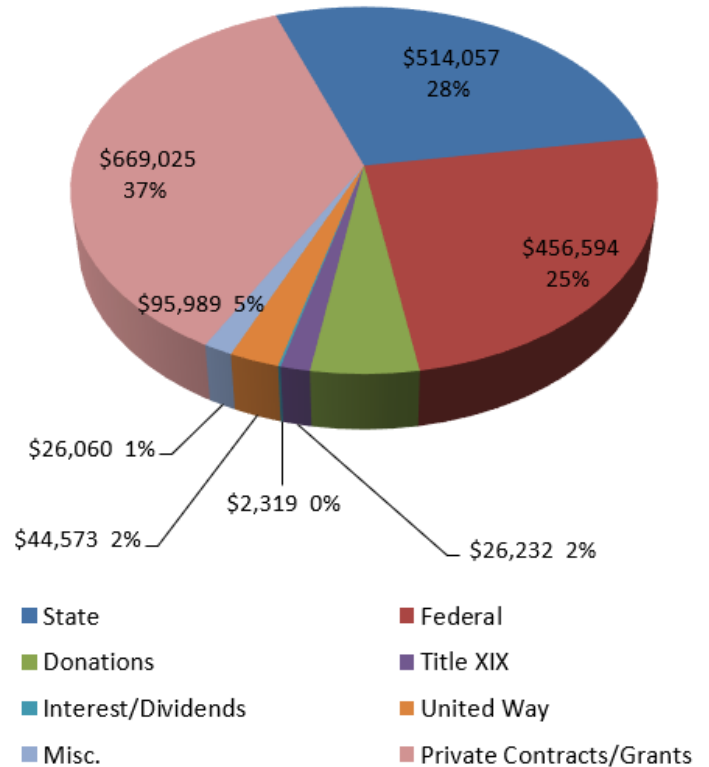
Assets	2019
Cash	\$302,814
Investments	\$125,319
Accounts Receivable	\$173,853
Prepaid expenses	\$17,352
Property & Equipment	\$0
Total Assets	\$619,338
Liabilities	
Accounts Payable	\$19,430
Accrued Absenses	\$44,597
Total Liabilities	\$64,027
Equity	\$555,311
Total Liabilities & Equity	\$619,338

Statement of Activities as of June 30, 2019

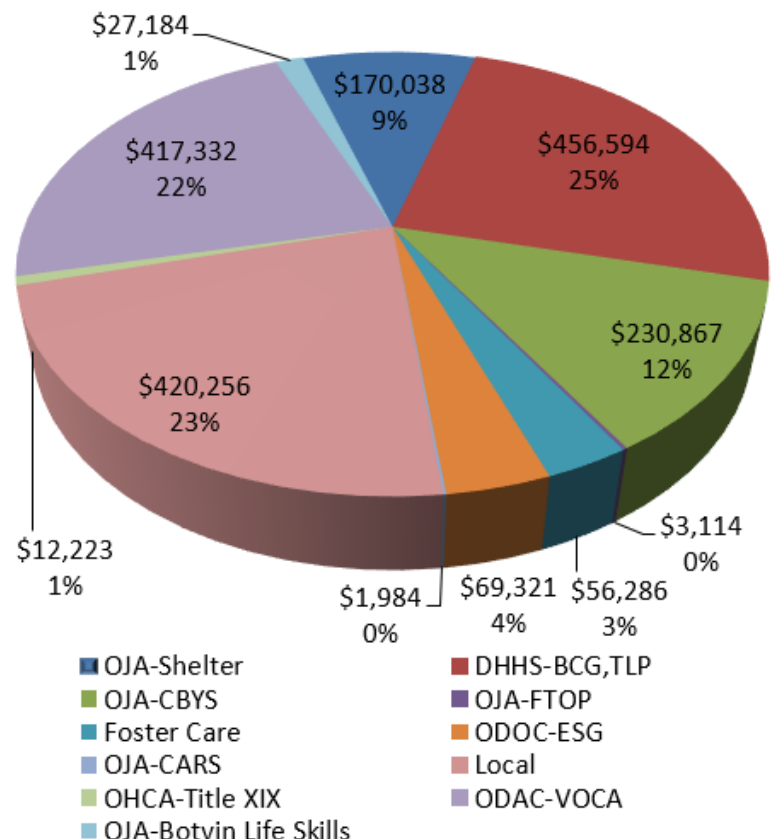
Revenue	2019
State	\$514,057
Federal	\$456,594
Donations	\$95,989
Medicaid	\$26,232
Interest	\$2,319
United Way	\$44,573
Misc.	\$26,060
Private Contracts	\$669,025
Total Revenue	\$1,834,849

Expenses	
Program Services	\$1,444,943
Administrative & General	\$420,256
Other	\$0
Total Expenses	\$1,865,199
Equity at Beginning of Year	\$594,408
Equity at End of Year	\$555,311
Change in Equity	-\$39,097

Revenue FY19



Expenses FY19



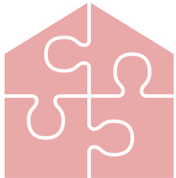
MENTAL HEALTH AND SUBSTANCE ABUSE COUNSELING AND CRISIS SERVICES

Let's

Talk!

The PCYS Counseling Program provided mental health counseling and crisis services across Payne County. School-based services increased access to counseling while highly trained clinicians utilize a variety of evidence-based, trauma-informed interventions to children, youth and families.

TRANSITIONING INTO ADULthood



The Payne County Youth Services Transitional Living Program continued with 21 adults placed in apartments. Clients pursue educational and employment goals as well as receive individualized case management, counseling, and supportive services. Several clients successfully completed the program moving into full time employment, post-secondary education, and their own apartments.

NATIONAL SAFE PLACE WEEK CELEBRATED



PCYS celebrated National Safe Place week from March 17-23, 2019. Safe Place is a nationally acclaimed outreach program that makes help readily available to young people in crisis. Payne County Youth Services has operated the Safe Place program for Payne County since 1996. Payne County currently has 59 Safe Place sites and 30 OSU buses that carry the Safe Place sign.

EMERGENCY YOUTH SHELTER



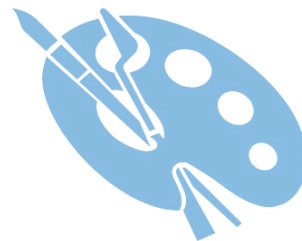
The PCYS Emergency Youth Shelter is so much more than a bed and a meal. When a child or youth is in residence at our shelter, they receive counseling, tutoring, medical evaluation, attend public school, many have a part-time job, learn life skills, go on outings, and participate in recreational and other activities, provided school supplies, and much more. You can help! Volunteer or donate today!

FY2019 COMMUNITY EDUCATION/DEVELOPMENT HIGHLIGHTS



FUNDING RECEIVED TO BEGIN NEW SUICIDE PREVENTION PROGRAM

PCYS was granted \$25,000 from the Sarkeys Foundation to launch Building a Competent Community for Suicide Prevention. Additional funding was provided by Elite Repeat and The Faye Allene Rife Brown Foundation. Partnering with the Oklahoma State University Wellness Center, the business of Wilson Auto Family, Exchange Bank, and Garden Party sponsored a community-wide training. Over 1,000 persons were trained this fiscal year.



LISTEN TO MY HEART

The 11th Annual *Voices of Today* Art, Poetry, and Photography Contest was held with 120 participants. The theme for this year's contest was *Listen to my Heart*. Participants explore and refine skills and talents, receive positive feedback and express thoughts and ideas in positive, age-appropriate ways.



3 YEAR CARF ACCREDITATION

Payne County Youth Services was honored to continue to provide counseling services as a CARF accredited organization, operating under our 3 year accreditation term. CARF International, or the Commission on Accreditation of Rehabilitative Facilities, certifies the PCYS Outpatient Counseling services, as well as administrative practices within the agency.

VICTIMS OF CRIME ACT

VOCA SERVICES EXPAND

Serving Victims of Crime is something that Payne County Youth Services has done well for over 47 years. This year the VOCA grant award was \$406,501, which will continue to allow PCYS to expand victim services. Thanks in part to recognition by the federal government that victims' services have been historically underfunded, additional monies were made available and passed to the states. VOCA funds are administered by the State of Oklahoma through the Oklahoma District Attorney's Council.



CITY OF STILLWATER

PCYS received a contract from The City of Stillwater in the amount of \$15,000. This contract supports crisis intervention, counseling and sheltering clients, as well as the general operations of the organization.



SMC HEART OF THE COMMUNITY GRANT

PCYS received a grant from the Stillwater Medical Center Heart of the Community Grant in the amount of \$1,000. This grant provided funds for the purchase of CPR materials for a Certified PCYS Trainer to train all staff quickly and efficiently.



FAYE ALLENE RIFE BROWN FOUNDATION

PCYS received a grant of \$30,000 from the Faye Allene Rife Brown Foundation. Strict guidelines and integrity of the granting process by the Brown Foundation add to the honor of being once again selected for this grant. Support from local communities continues to be essential to continue to provide free, high quality services to children, youth and families.



RESILIENT PAYNE COUNTY

PCYS is proud to be one of the founding agencies for Resilient Payne County, working with community partners to bring awareness and information regarding the significant impact trauma has on persons across the lifespan and how to build resiliency.



TULSA COMMUNITY FOUNDATION

To contribute to our Endowment Fund, please contact PCYS or Tulsa Community Foundation.

UNITED WAY DAY OF CARING

September 2019 marked the 24th Annual Day of Caring for the United Way of Payne County. Payne County Youth Services, a proud United Way agency, was happy to help by sending a work crew of staff to complete yard work for a Mobile Meals client.



Staff member groups from Stillwater Medical Center, Interworks, OSU Spears School of Business, and Arvest Bank volunteered at both PCYS locations, providing many hours of painting, repairs, redecorating and remodeling. Thank you to Stillwater Medical Center, Interworks, OSU Spears School of Business, Arvest Bank, and United Way for all of your hard work!

GENEROSITY OF THE GREENWOODS



Michael and Anne Greenwood provided a donation of \$10,000 to United Way to benefit PCYS. This United Way level of giving as a Tocqueville Leadership Giver level is a significant gift to both United Way of Payne County and to PCYS! PCYS also appreciates the direct donations, and other supports provided for our kids by these amazing philanthropists.

ELITE REPEAT

Elite Repeat, an upscale resale shop in Stillwater, continued its generous support of the programs of PCYS by continuing their funding of \$36,000. Additional support includes grants for special projects and donations of clothing and household items to PCYS program participants.



Elite Repeat solicits donations of items from the community and then awards grants to local non-profit organizations. A critical partner to PCYS, Elite Repeat provides a unique shopping experience at great rates to customers while providing cash and in-kind donations to PCYS. Support such as this assists PCYS to bring additional state and federal dollars to our community.

MORE NEWS...

AN EVENING TO REMEMBER KICK OFF TO 20 DAYS OF GIVING FROM THE HEART

Oklahoma State University President and First Cowgirl, Burns and Ann Hargis starred in a beautiful video promotion for the 11th annual *An Evening to Remember* announcing the kick off to the successful PCYS digital campaign, *20 Days of Giving from the Heart*. We appreciate their on-going support.

LIGHTS ON STILLWATER

PCYS held a booth at OSU Student Government Association's annual Lights on Stillwater. The success of this yearly event has enhanced the interaction between OSU students, the surrounding community, and PCYS.

HARVEST II

PCYS received a significant and much appreciated annual donation of non-perishable food from Harvest II along with other support provided throughout the year. Junior Service League of Stillwater represents an amazing community partnership helping the children, youth and families of Payne County.

PCYS RECEIVES AN INCREASE IN SUPPORT AS A LIFE.CHURCH LOCAL MISSION PARTNER

PCYS is proud to be a Life.Church Local Mission Partner and appreciate the increasing the number of volunteers and cash donations received. FY2019, PCYS was presented with an increase in funding which is based on the number of Life.Church volunteers that support PCYS.

OKLAHOMA STATE UNIVERSITY AS CRITICAL PARTNER

PCYS partners with OSU across many departments, hosting internships, hiring OSU students and OSU grads, benefit from support of student groups, Greek life, residential life, and is proud to name many OSU faculty, staff, and volunteers across memberships of our Board of Directors and Advisory Board to Sustainability and Public Affairs.

PCYS HONORED DONORS AND VOLUNTEERS AT ANNUAL APPRECIATION DINNER FOR FISCAL YEAR 2019

An annual celebration of the many ways in which donors and volunteers support the agency and the children, youth, and families it serves. Guests enjoyed a great meal and received updates on agency programming. They were also able to take home a special message gift as a reminder that they are the rock of our agency and to acknowledge how each donor and volunteer is a life changer in the life of a client. Appreciation Awards were given in several categories to recognize some of the donors and volunteers.

Heart of the Community

- ♥ Cimarron Valley Quilt Guild
- ♥ Aaron & Charley Box and Family
- ♥ Oklahoma WONDERtorium

Outstanding Advisory Board Member

- ♥ Chris Young

Outstanding Corporate Sponsor

- ♥ Enbridge
- ♥ Wilson Auto Family
- ♥ RCB Bank

Outstanding Collegiate

- ♥ OSU Education, Health, & Aviation Student Council
- ♥ OSU Athletics
- ♥ OSU Delta Sigma Theta Sorority

Outstanding Volunteer

- ♥ 2 Fellas & A Big Vehicle Moving Company

Builders

- ♥ Life.Church
- ♥ John Bryant

Creative Contributions

- ♥ Stillwater High School Orchestra
- ♥ Stillwater High School Vocal Music
- ♥ John Grice
- ♥ Bryce Jech

Key Resource

- ♥ United Way of Payne County
- ♥ Elite Repeat
- ♥ Anne & Michael Greenwood

Outstanding PCCWAC Board Member

- ♥ David Pitts

Outstanding Board Member

- ♥ Dustin Bledsoe



GRATEFULL FOR 12 YEARS OF SERVICE

Kimberly Coates became the Payne County Youth Service Shelter Director in 2007. Kimberly has been a blessing to the hundreds of children, youth, and families that she has come in contact with by sharing her caring personality to everyone every day.



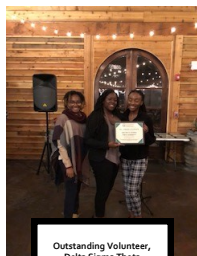
WELCOME NEW SHELTER DIRECTOR



PCYS welcomed Judith Christiansen as the new Shelter Director! Judith began at PCYS in 2016 as the Prevention/Intervention Specialist focusing her talents at Stillwater Middle School and the PCYS Emergency Youth Shelter working with students with behavioral and emotional issues. She is a retired principal and educator with a Masters of Arts in Special Education and Gifted and Talented Education. We are excited and confident in her abilities and look forward to the future with the shelter under her management.

SUCCESS AND GROWTH AT PCYS

PCYS and the Payne County Child Welfare Advisory Committee (PCCWAC) completed the purchase of the middle section of the building at 12th and Western in Stillwater which houses our clinical and social services offices. This acquisition will allow more services to be provided directly to children, youth, and families as well as adding some administrative space.



Outstanding Volunteer,
Delta Sigma Theta
Sorority



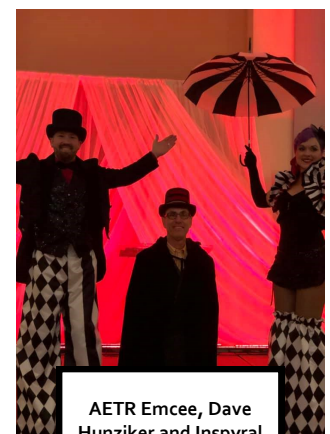
Team PCYS Leadership Training



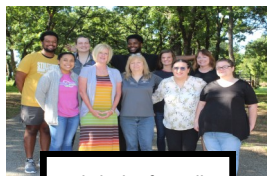
Eskimo Joes showing love through the
Adopt A Family program



Welcome new United Way
of Payne County Executive
Director, Ruth Cavins



AETR Emcee, Dave
Hunziker and Inspyril
Entertainment



Kimberly's farewell



FRI reinstalls bus stop



Halloween Candy from
Payne County 4H



Coats for TLP from
Elizabeth Beck and
family



Life.Church grant
accepted by Board
Chair, Dale Sorrell



Perkins Old Settler's Day



All boards annual meeting

◀ a look back



FY2019 DONORS

* Financial | ** In-Kind | V Volunteer | A Adopt-A-Family

**	1st United Methodist	**	Sherre Davidson	**	Susan Hollman	*	Marisa Millirons
**	2 Fellas & A Big Vehicle	*	Deeprook Energy	**	Home & Community	*, V	John Mills & Sue Bonner
**	A&M Board Office of Internal		Resources		Education	*	Malinda Mills
	Audit	V	Delta Sigma Theta Sorority	V	Charisma Horner	*	Kelsie Miner
V	Abundant Life Church	*, V	Lee Denney	V	Kent Houck	*	Russell Miner
**	Becky Adams	**	Bethany Diaz	*	Houck Agency	*	Rusty Miner
*	Advantage Plumbing, Heating,	*	Linda Dickerson	**	Heather Houle Family	*	Lissette Minges
	and Cooling	*, **	Kenneth Dickson	*, A	Molly Housley	**	Janice Mitchell
**	Tony & Debbie Aguilar	*	Robin Dye	**	Samantha Housley	*	Joyce Montgomery
*	Sherry Alexander	V	Adam Dyess	*	Houston, Osborn, Sexton,	V	Summer Montgomery
*	Gladeen Allred	*	Kyle Eastham	*	Thomas PLLC	V	Jeff Moody
*	Amazon Smile	*	Laurie Eastman	V	Emily Howard	V	Jonathan Moore
*	Chad Anglin	V	Janae Eaton	**	SueAnn Hudiburg	**	Sandra Morgan
*	Haley Annuschat	*	David & Jonnie Edwards	*	Judith Hull	*, **, V, A	Kylie Moulton
**	Anonymous	*, V, A	Shyla & Rick Eggers	*, V	Mary Beth & Dave	**	Mulhall-Orlando Lions Club
*	Arvest	*	Elite Repeat		Hunziker	**	Patricia Mullins
*, V	Blaire Atkinson	**	Matt Elliott	*	Dale & Ellen Ingram	**	Kay Murphy
*	Mona Autry	V	Tina Ensign	*	InterWorks, Inc.	*	Jamie Murray
**	Betsy Avery	**	Eskimo Joes	*	Iron Monk Brewing	*	Philip Murray
**	James Avery	**	Leeann & Larry Eslinger		Company	**	Britni Nealis
**	Lisa Ayala	*, A	Kenna Evans	**	Shawn Irons	V	Megan Nelson
*, V	Richard & Dana Ayers	*	Exchange Bank	*	J. Douglas Dunivan	*	Network for Good
**	Cate Back	**	Nancy Eytcheson	**	Ezekiel Jackson	**	Karen & George Neurohr
**	Mae Badiyan	V	Lance Falen	*	Scott & Mary Jackson	**	John Newburn
**	Noelle Baker	V	Calen Faley	**	Zeke Jackson	V	Jarrod Noftsgger
*	BancFirst	V	Jill Farley	*	Mark Jensen	*, **, A	Kim Nolting
*	The Bank NA	**	Jeb Fath	*	Vicky Jerome	**	Carol North
V	Nicole Barton	*	Faye Allene Brown	*	Kirk Jewell	V	North Jardot Church of
*	Andrew & Courtney Bay		Foundation	*	Alicia Johnson		Christ
**	Jack Bayles	**	Ronee Finch	**	Barbara Johnson	**	Mr. & Mrs. Vince
*, A	Kim Beard	**	First Christian Church	*, A	Cheryl Jones	**	Notareschi
**	Elizabeth Beck	*	First Presbyterian Church		Lisa Jones		Oklahoma State University
**	Cara Beer	*	First United Methodist	**	Junior Service League of		Alumni Association
V	Kevin Bell		Church		Stillwater	*, **, A	Old Navy
V	Jana Benda	*	Virginia Fitter	**	Karsten Creek	*	Cynthia Oldham
V	Christian Blacet	*	Foot by Foot Construction	**	Steve Kelly	*	Keri Oldham
*	Laura Black	*, A	Marsha Forbes	V	Chasity Kemp	**	Karl Oltmanns
*	Jennifer Blake	*, V	Fractionation Research I	*	Patrick Ketcher	**	Orange & Black Gives Back
**	Amanda Blalock		nstitute	*	Cathy Kindt	*	Michael Orear
*, V, A	Dustin Bledsoe	**	Jodie Franzmann	*	Klepper Law	**	Barbara Osteen
V	Josie Blosser	**	Sondra Franzmann	**	Sharon Klingaman	V	OSU Basketball
*	JohnBode	*, **	Angie Freeny	**	Tricia Klopfenstein	**	OSU Career Services
**	Boulder Creek Neighborhood	*	Roger & Stephanie Fry	*	Koemel Law	*, A	OSU CEAT Dean's Office
**	Aaron & Charley Box	*	Janet Fultz	*, **	Nancy Kramer	*, A	OSU Department of
*	Dr. Robert Breedlove	**	Ed & Amy Gallegos	**	Ross Langendorfer		Wellness
**	Rita Brenninger	*, V	Dr. Candace Gann	V	Jim Lauerman	*	OSU Division of Diversity
**	Carlene Brown	*	Gap Foundation	*	Kelsey Lee	*, A	OSU Family & Consumer
V	Trenton Brown	*	The Garage	*	Bailey Lefthand		Sciences
*, V	John Bryant	*	Garden Party Florist	*	Jeremy Leister	**	OSU Human Sciences
*, V	Bob & Norma Burk	*	Richard & Nancy Giles	**	Lynn Lester	**	Family & Consumer
**	Renae & Vincent Burk	**	Lauren Gin	*, V	Life Church	**	OSU Saudi Student
**	Allen Cain	*	Sarah Gold	**	John Linehan		Association
**	Tony Cain	**	Golden Kiwanis	*	Gene & Linda Longworth	*, A	OSU University Club
*, A	JoAnne Callaway	*	Phillip Goodwin	*	Richard Lowery	*, A	OSU-Stillwater EHS
*, **	Ray & Jo Campbell	V	Grace Church	V	Aubrey Lucas	**	Lacy Owens
V	Steve Carpenter	V	Kamille Greene	**	Lunch Bunch	*	Bryan Padgett
**	Sheri Carter	*, V	Anne & Michael Greenwood	*	Jim & Joann Lunsford	**	John & Sue Paine
*, A	CBSA	**	Peggy Gregory	V	Abby Lynn	**	Passion Planner
*	Elizabeth Chaffin	*	Billy & Brittni Griffin	*	Lois Malget	*	Cody Paul
*	Christian Womens Fellowship	V	Kelsey Grounds	V	Josiane Marbioli	*	David Paul
*	Church Women United	V	Lucas Grounds	V	Waverly Martin	*, V	Jamie & Tony Payne
**	Cimarron Quilt Guild	**	Suzette Gunderson	V	Aija Martin	*	Molly Payne
**	Ruth Circle	**	Michael Hadfield	V	Jayla Martin	*	Payne County Bank
*	City of Stillwater	V	Joy Haken	**	Brian Martin II	*, A	Payne County Leadership
**	City of Stillwater Utility &	*	Melissa Hall	V	Marisa Martinez	V	Wade Pearson
	Billing Services	*	Tommy Hall	**	The Mateen Badiyan	V	Scott Petty
*	Gary Clark	V	Zach Hall		Foundation	*	Doris Phillip
**	Laura Clark	*, **, V, A	Ann & James Halligan	*	Ntunzwenimana Mathieu	V	Christopher Phillips
**	Jamie Clinesmith	**	Ferran Hamilton-Youngbird	*	Yolande Mbah-Mbole	*	Robert & Doris Phillips
*, **, A	JoLinda Cooper	V	Cristin Handlin	V	Peggy McCormick	*, A	Physical Therapy Central
**	Countryside Baptist Church	*	Lehigh Hanson	*	Donna McCright	**	Kel Pickens
V	Gentry Cox	*, V	Ann & Burns Hargis	**	Michelle McDaniel	*	Sharyl Pickens
**	Jennifer Cox	**	Walter Harrell	V	Raina McEntire	*	Randy Pittman
V	Tad Cox	V	Dorion Hasty	V	Anna McHenry	*, V	David Pitts
*	Diane Crane	V	Makaela Hayward	V	Bryan McNeil	*	Erin Portman
*	Nancy Crenshaw	*, V	Jerod & Emily Helling	*, **	Terry Melendez	**	Carol Ann Powell
*	Cali Crissup	**	Heritage 4-H Club	**	Mary Melton	V	Charlotte Precious
**	Jennifer Crosthwait	V	Alexandra Hiatt	V	Meridian Technology	*	Presbyterian Women's
**	Dan Crummento	V	Brian Hobbs		Center		Bowling League
*	Shelby Cypret	V	Danielle Hodges	*	Metro First Realty	*, V	Brett Price
V	Chris Dabbs	**	Clarence Holley	**	Carolyn Meyre	*, V	Brian & Stephanie Price

FY2019 DONORS



		*, **, V	Stillwater Medical Center
		*	Stillwater NewsPress
		*	Stillwater Steel & Supply
		**	Stillwater VFW
		V	McKinsey Stokes
		V	Barbara Stone
		*, V	Trent Swanson
		V	Carolyn Swink
		V	Tatum Swink
*	Nicole Prince	**	Pam Teel
**	Vicki Quinn	*	Territory Resources
V	Emma Rackley	**	Doris Terry
**	Carisa Ramming	**	Shelia Tharp
*	Trish Ranson	*	Gary Theilen
**	Andrea Rauscher	**	Theta Mu Chapter of Alpha
*, **	Darrel & Ruby Ray	*	Sigma Phi
*,	RCB Bank	V	Crystel Thomas
**	Red Rock Alumni	V	Selton Thomas
	Association	V	Alexa Thornton
V	Redeemer Church	**	Touchdown Club
*	Sydney Reding	**	Jenna Trissel
**	Ally & Angel Reese	**	Linda Trissel
V	Cierra Rhodes	*	Stephen Trompler
V	Blaine Rider	*	TS Fork
V	Kendra Rider	**	Madilyn Tyner
*	David & Mitzi Riggs	**	UHBC Monday Night Bible
*	Marva Roach	*, A	Study
**	Merrie Roach	*	Unitarian Universalist
*	BJ & Maria Roberson	*	Church of Stillwater
V	Jamie Robinson	*	United Methodist Women
*, A	The Robinson Agency	*	University & Community
V	Joe & Angel Rogers	*	Federal Credit Union
V	Korri Rogers	*	University Heights Baptist
*	Dr. Brenda Rolls		Church
*, V	Ty & Alysia Ropp	V	Hailey Vaughan
V	Ragan Roth	V	Sarah Vaughan
*, A	Kimberly & Darrell Sadler	V	Morgan Vaverka
**	Salem Lutheran Church	**	Shannon Violetti
*	Kent & Sheila Sampson	**	Caity & Samantha Wagner
V	Madison Scheur	*	Caity & Samantha Walker
V	Justine Schleve	**	Ruth Walker
**	Jennifer Schneider	V	Carrie Walling
**	Debby Schoenecke	V	Maxwell Watson
**	Jamie Schuermann	V	Joseph & Patti Weaver
**	Karsten Scott	*	Carly Webb
**	Emma Self	*	Tyler Webb
**	Mary Jo Self	V	Denise Webber
V	Micah Sexton	**	Colton Welch
**	Laura Sharp	*, V	Dannah Whelan
*	Betty Bryant Shaul	**	Whispering Hills Apartments
**	Robert Shelton	**	Christine Whitbeck
*	Kami Shipman	V	Dr. Carl & Lajeane Whitcomb
**	Showcase Furniture	*	Brittany White
V	Gary Shutt	*	Dr. Jason White
*	Justin Siler	V	Cheryl Wilkerson
*, **	Simmons Bank	*	Carl Williams
*, V	RuthAnn Sirbaugh	**	Cory Williams
*, **	Sisters Helping Sisters	*	Karen Williams
*, A	LaTricia Snider	V	Aaron Wilson
V	Maci Snyder	*	Kathleen Wilson
*, V	Dale Sorrell	**	Wilson Auto Family
**	Annabelle Soucie	**	Wings of Hope
*, A	Kim Southworth	V	Carrie Winterowd
V	Shelbye Spencer	V	Rob Woods
*, V	David & Valerie Spivey	*	Joe Bob & Melody Wright
**	St. Francis Xavier Catholic	*, A	Thomas & Cristi Wuller
	Church	*, **, V, A	Chris & Sarah Young
*	Gerald Stangl	**	Youth Focus Group
V	Michelle Steel	**	Pat & Susan Zimmerman
V	Ericher Stevenson		
**	Stillwater Catholic Women		
**	Stillwater Community		
**	Thanksgiving		
**	Stillwater Key Club		



Office: 405.377.3380
2224 W 12th Ave, Stillwater, OK 74074

Shelter: 405.377.1452
2804 W 32nd St, Stillwater, OK 74074

BOARD OF DIRECTORS

Chairperson Dale Sorrell
Vice Chairperson Candace Gann
Treasurer/Secretary Jim Lauerman

Directors

Lee Denney	Brian Hobbs
Bryan McNeil	Dustin Bledsoe
Tylerr Ropp	John Mills
Ruthann Sirbaugh	David Spivey
Aaron Wilson	Kevin Bell
Jerod Helling	Micah Sexton
Kylie Moulton	Angela Pradia
Brian Price	

Advisory Board

Richard Ayers	John Bryant
Bob Burk	Kelly Burley
Shyla Eggers	Terry Brannon
Anne Greenwood	Ann Halligan
Ann Hargis	Kent Houck
John Romans, PhD	Chris Young
Cory Williams	Carrie Winterowd, PhD
Jamie Payne	Shelbye Spencer
Blaire Atkinson	Jarrod Marcum-Noftsgar

PCCWAC

Bob Burk	Steve Carpenter
Peggy McCormick	David Pitts
David Spivey	Trent Swanson

STAFF

Executive Director Janet Fultz, NCC, MS, LPC
Shelter Director Judith Christiansen, MA
Clinical Director Brad Epperson, NCC, MS, LPC
Finance Director Wes Horne, BS
Community Relations / Prevention Services Director Angie Freeny, MS

Laura Black	Belinda Martinelli
Brittni Griffin	Andrea Drain-Langston
Alicia Johnson	Britney Hardin
Cassie Pickens	Josie Blosser
Wonda Johnson	Rachel Lewis
Hank Miller	Aryanna Swanson
Whitney Hampton	Clark Pepper
Emily Madison	Diamante Mitchell
Chasity Kemp	Stacie Graf
Barbara Dalton	Dana Hatter
Tonya Tyner	Aglaia "Alexis" Martin

